

Using Data Sets

Systems Support		
	Yes	No
Operating Systems		
Windows	✓	
Mac	✓	
Browsers		
Chrome	✓	
Internet Explorer	✓	
Firefox	✓	
Safari	✓	

Other Software Needs

To open and use data sets downloaded from SAGE websites, you will need SPSS, an IBM product with its own hardware and software requirements: <http://www-01.ibm.com/software/analytics/spss/>


1. How do I access data sets?

Data sets are available from your text’s student companion website or the “Resources” tab of your book’s product page. Student companion sites are free and open-access, and data sets can be downloaded without registering for an account. To find the companion website for your text, follow the url on the back of your book or find the link by going to the book product page on SAGE’s website. Go to www.sagepub.com, search for your book, and click on the “Resources” tab.

Here’s an example of **data sets** linked from within the “Resources” tab:

The screenshot shows the SAGE Publishing website for the book "Creating and Verifying Data Sets with Excel" by Robert E. McGrath. The page includes a navigation menu with "DISCIPLINES", "PRODUCTS", "RESOURCES", and "ABOUT". Below the book title, there is a "Companion Website" link. A "Courses" section lists various disciplines. A "DESCRIPTION" tab is selected, showing "Sample Materials & Chapters" with links to "Chapter 2", "Chapter 5", "Data Set for Chapter 4", "Data Set for Chapter 5", and "Data Set for Chapter 6". A "Supplements" section at the bottom contains a link to "Data Sets", which is highlighted with a red box. Below this link, a note states: "Data sets for this text are available under the 'Sample Materials & Chapters' heading above."

Here's an example of **data sets** linked from the student companion website:



DESCRIPTION CONTENTS **RESOURCES** REVIEWS FEATURES PREVIEW

Sample Materials & Chapters

[Chapter 1: Why is my evil lecturer forcing me to learn statistics?](#)

Supplements

[Companion Website](#)

The enhanced companion website features, for lecturers:

- Powerpoints
- Subject-specific testbanks

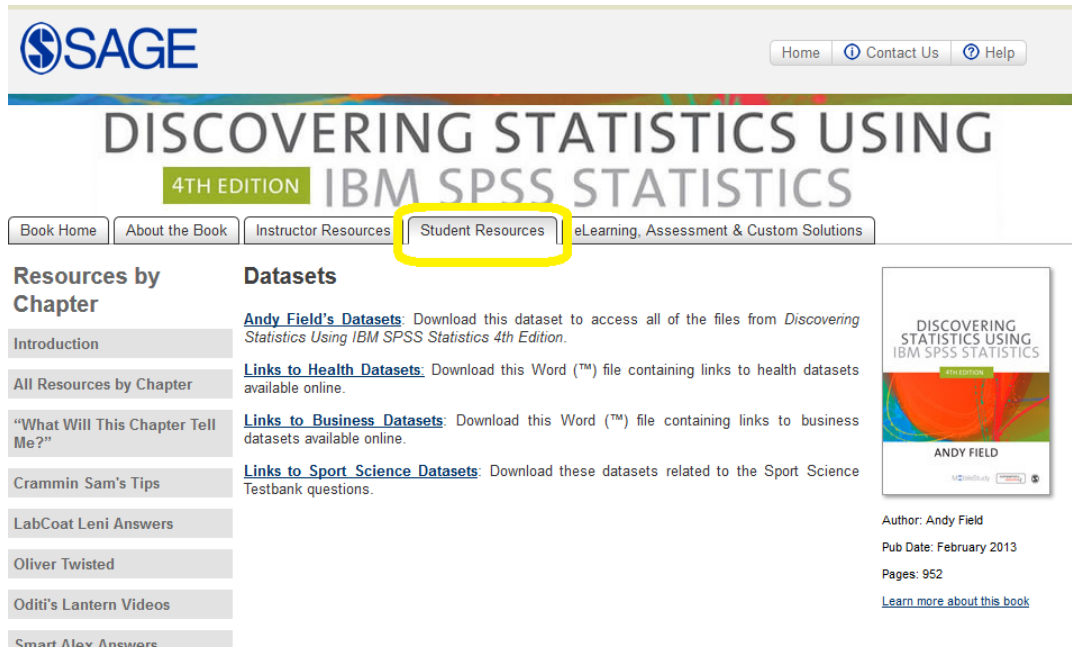
And for students:

- Answers to Smart Alex tasks
- Datafiles
- Flashcards
- Self-assessment multiple-choice questions
- Online videos of key statistical and SPSS procedures

[MobileStudy](#)

Please note: If you're accessing the site from a desktop you'll be taken to the Companion Website instead; look out for the MobileStudy icon to show you which pages are also available on the MobileStudy site

Once on the companion website, navigate to the **Student Resources** tab.



SAGE Home Contact Us Help

DISCOVERING STATISTICS USING 4TH EDITION IBM SPSS STATISTICS

Book Home About the Book **Student Resources** Instructor Resources eLearning, Assessment & Custom Solutions

Resources by Chapter

- Introduction
- All Resources by Chapter
- "What Will This Chapter Tell Me?"
- Crammin Sam's Tips
- LabCoat Leni Answers
- Oliver Twisted
- Odit's Lantern Videos
- Smart Alex Answers

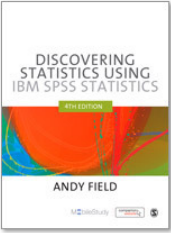
Datasets

Andy Field's Datasets: Download this dataset to access all of the files from *Discovering Statistics Using IBM SPSS Statistics 4th Edition*.

Links to Health Datasets: Download this Word (™) file containing links to health datasets available online.

Links to Business Datasets: Download this Word (™) file containing links to business datasets available online.

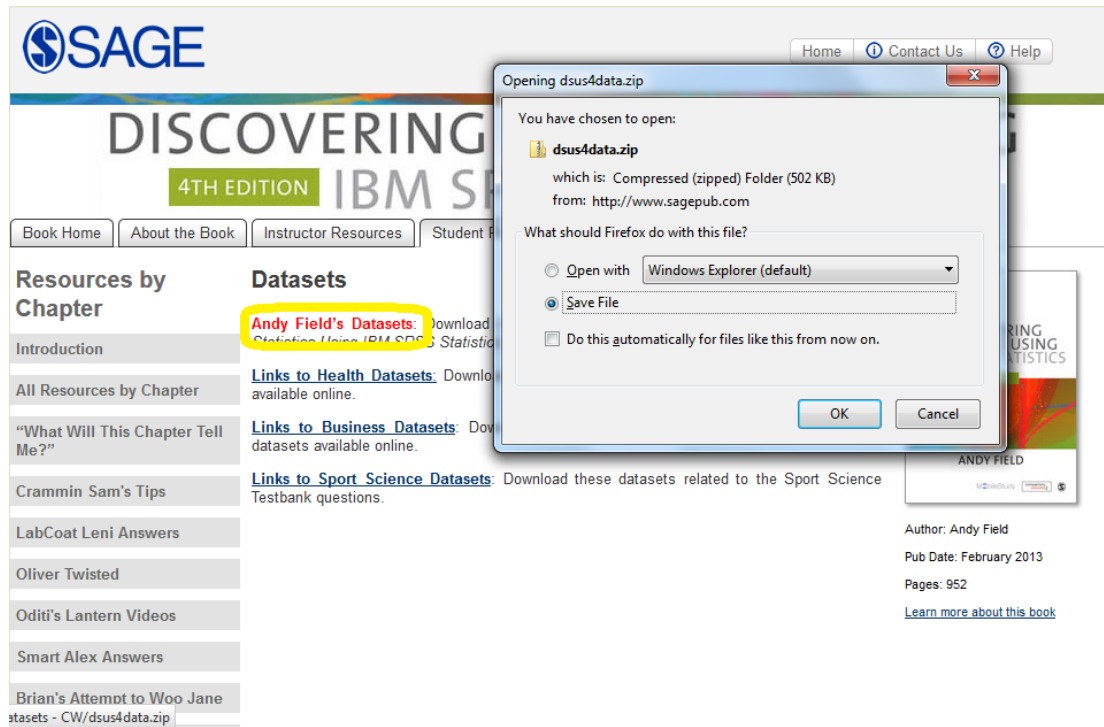
Links to Sport Science Datasets: Download these datasets related to the Sport Science Testbank questions.



Author: Andy Field
Pub Date: February 2013
Pages: 952
[Learn more about this book](#)

Companion websites include data sets in various formats, including .dat, .xlsx, .sas, .sav and .zip. You will need to download the data set file you want to use to your local directory and then open it using the appropriate program.

Batches of data sets may be saved in a .zip file. To download the .zip file and save it, click on the data set link.



Once you have saved the .zip file, navigate to the location where you saved it. Open the .zip file to extract the .sav files for use in SPSS.

Name	Type	Compressed size
Album Sales.sav	SAV File	3 KB
Angry Pigs.sav	SAV File	1 KB
Angry Real.sav	SAV File	1 KB
Attitude.sav	SAV File	1 KB
Band Personality.sav	SAV File	2 KB
Beckham (1929).sav	SAV File	1 KB
BeerGogglesLighting.sav	SAV File	1 KB
Bernard et al. (2012).sav	SAV File	2 KB
Big Hairy Spider.sav	SAV File	1 KB
BigBrother.sav	SAV File	1 KB
Board & Fritzon 2005.sav	SAV File	1 KB
Burnout.sav	SAV File	6 KB
Bushtucker.sav	SAV File	1 KB
Cipetinkaya & Domjan (2006).sav	SAV File	1 KB
Cat Regression.sav	SAV File	1 KB

2. Who do I contact for tech support?

For questions about finding or downloading data sets from SAGE companion websites, contact us using one of the following methods:

Complete a [Technical Support Form](#)

email textbookstechsupport@sagepub.com

call 1 (800) 818-7243 ext. 7080 / 1 (805) 410-7080 Monday - Friday: 10:00 A.M. - 8:00 P.M. EST

Contact IBM for all questions about using data sets in SPSS. Here is IBM's SPSS student support page:

<http://www-01.ibm.com/support/docview.wss?uid=swg21592093>

Also, consult your institution's library, instructional technology services department or statistics department for training materials about how to use SPSS.

3. How long do I have access?

You have access to the companion website for as long as the book's edition is in print. Once a new edition of the book comes out, the site will be updated shortly thereafter.

4. I'm getting an error when I try to access data sets. What do I do?

Be sure you are using SPSS to open files with a .sav file extension. These files will only work within the SPSS program.