

STARCOM

PORT ST. LUCIE POLICE DEPARTMENT CRIME AND INTELLIGENCE ANALYSIS UNIT



Michelle Chitolie

Cheryl Davis

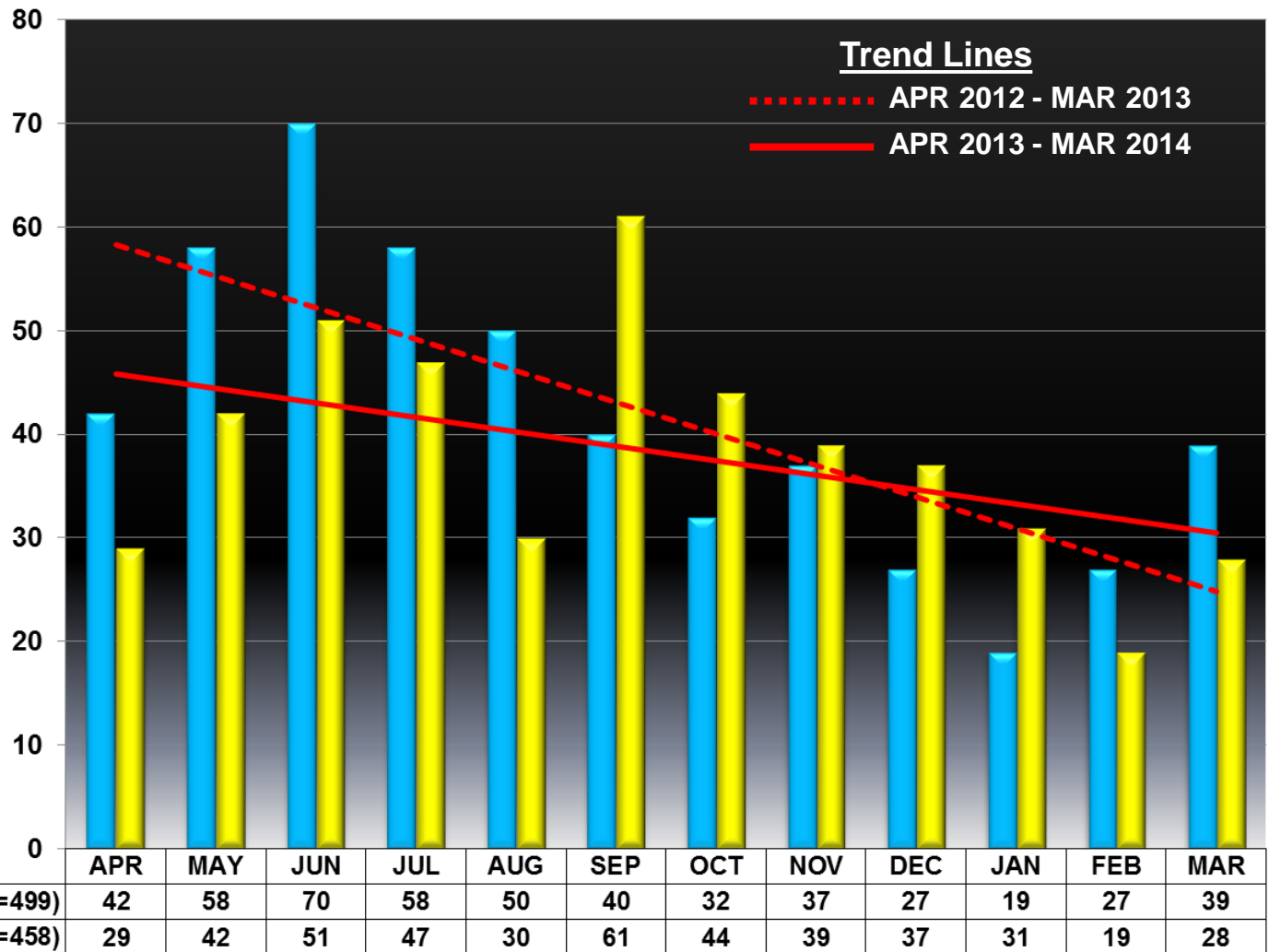
APRIL 2014



PORT ST LUCIE POLICE DEPARTMENT

Citywide Auto Burglaries – 12 Month Trend Comparison

April 2012 – March 2013 vs. April 2013 – March 2014



Decreased 8.2% (-41)

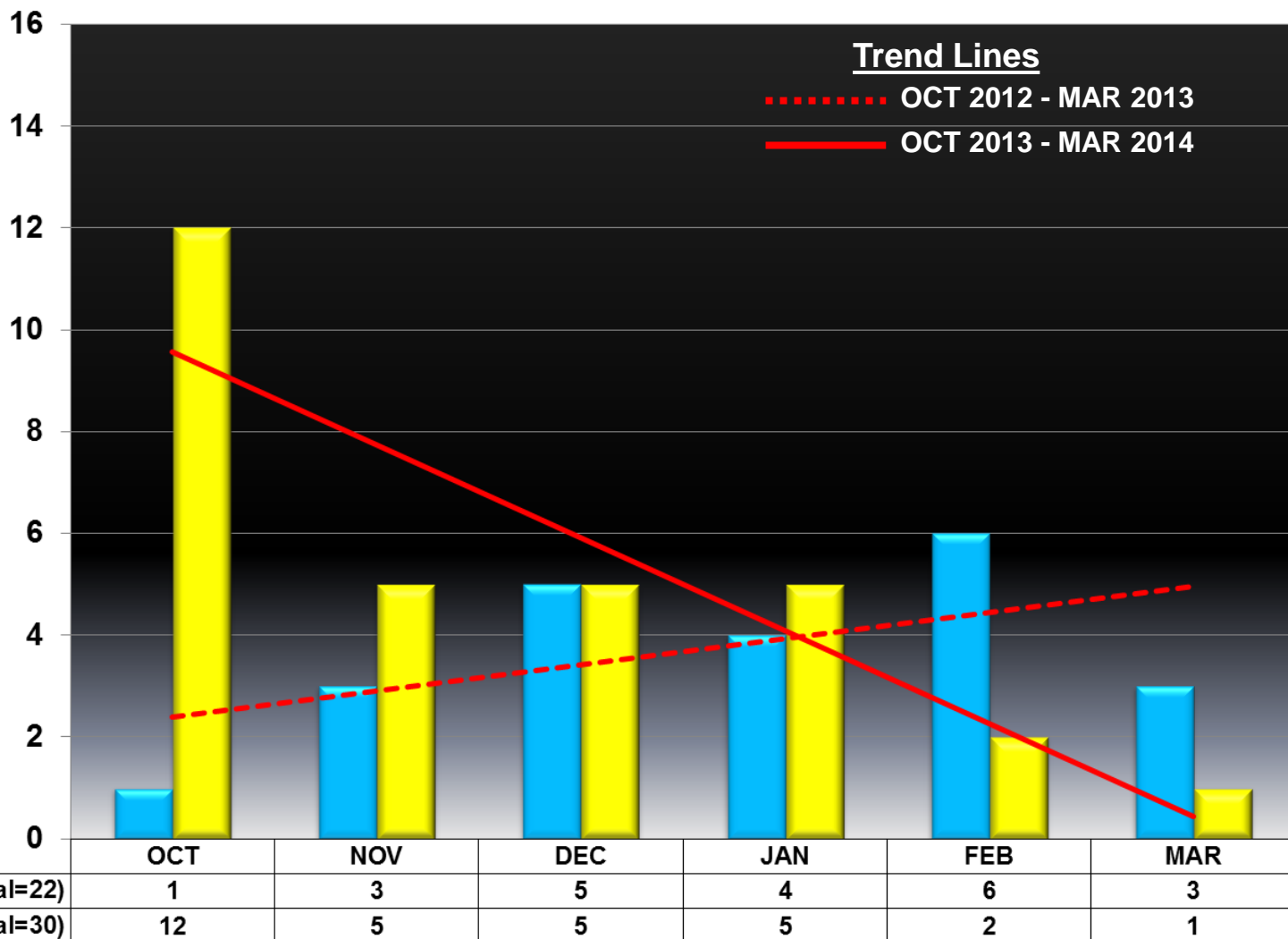
Source: OSSI RMS



PORT ST LUCIE POLICE DEPARTMENT

District 1 Auto Burglaries – 6 Month Trend Comparison

October 2012 – March 2013 vs. October 2013 – March 2014



Increased 36.4% (+8)

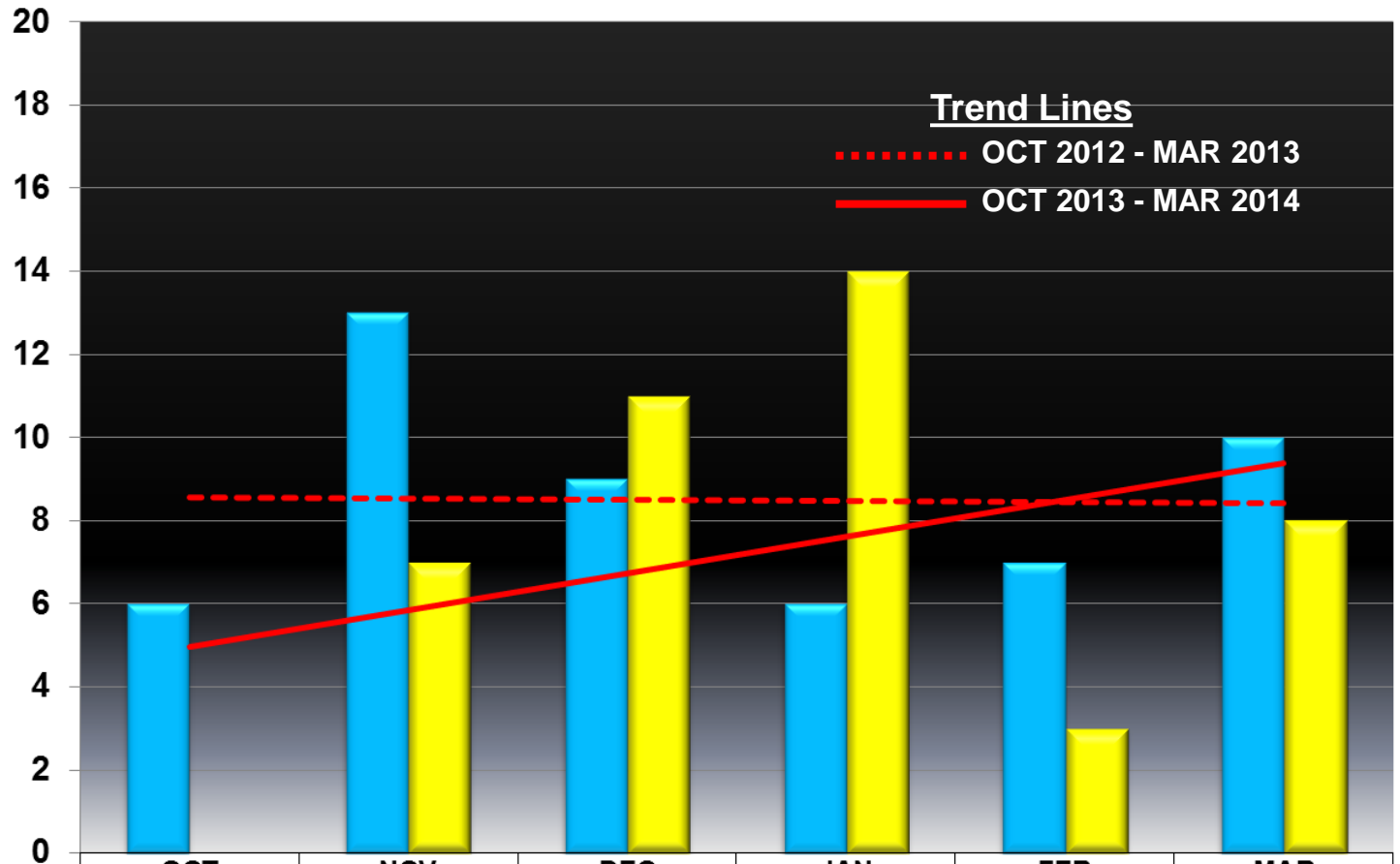
Source: OSSI RMS



PORT ST LUCIE POLICE DEPARTMENT

District 2 Auto Burglaries – 6 Month Trend Comparison

October 2012 – March 2013 vs. October 2013 – March 2014



■ OCT 2012 - MAR 2013 (Total=51)

■ OCT 2013 - MAR 2014 (Total=43)

OCT

NOV

DEC

JAN

FEB

MAR

6

13

9

6

7

10

0

7

11

14

3

8

Decreased 15.7% (-8)

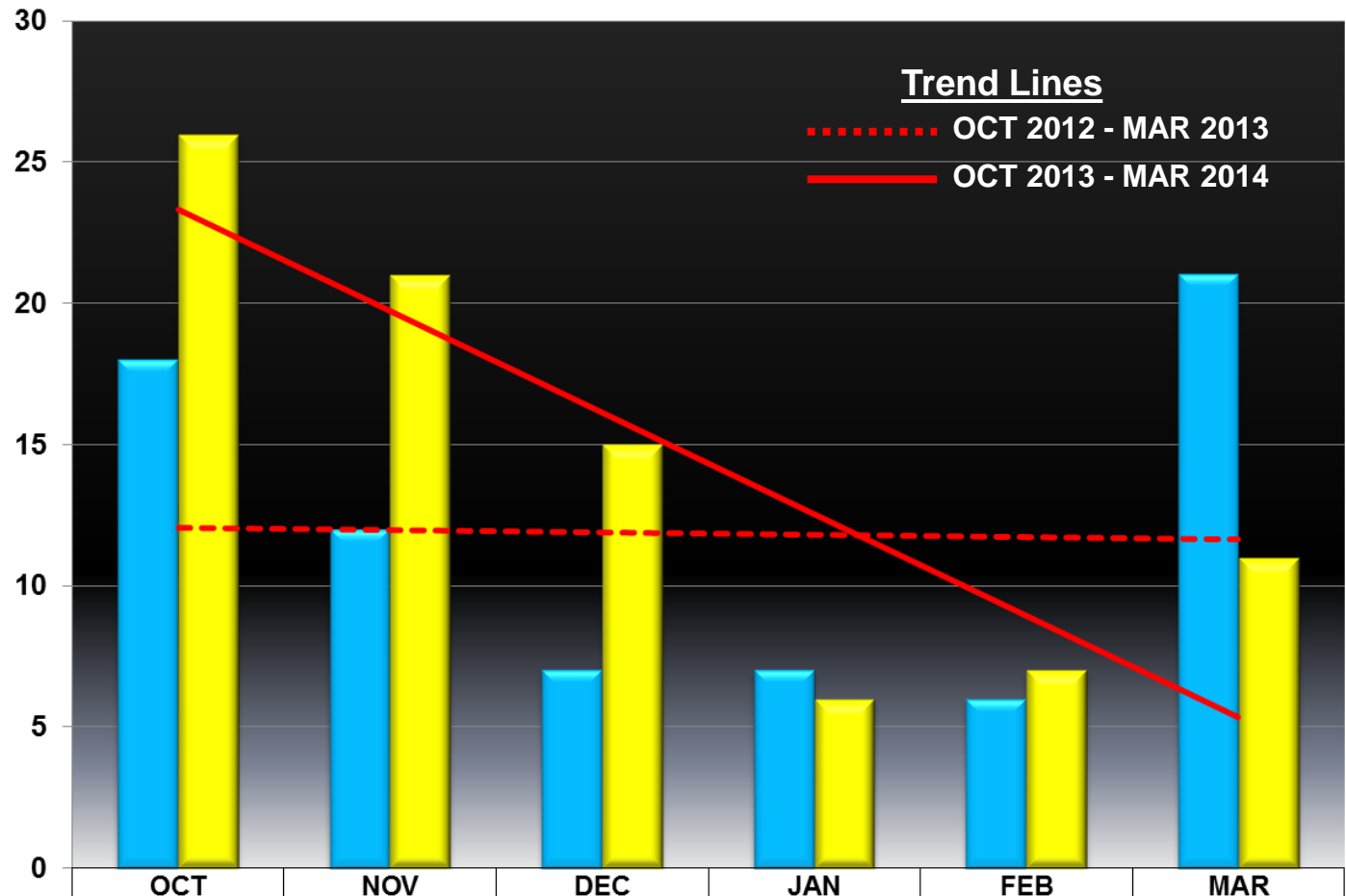
Source: OSSI RMS



PORT ST LUCIE POLICE DEPARTMENT

District 3 Auto Burglaries – 6 Month Trend Comparison

October 2012 – March 2013 vs. October 2013 – March 2014



■ OCT 2012 - MAR 2013 (Total=71)	18	12	7	7	6	21
■ OCT 2013 - MAR 2014 (Total=86)	26	21	15	6	7	11

Increased 21.1% (+15)

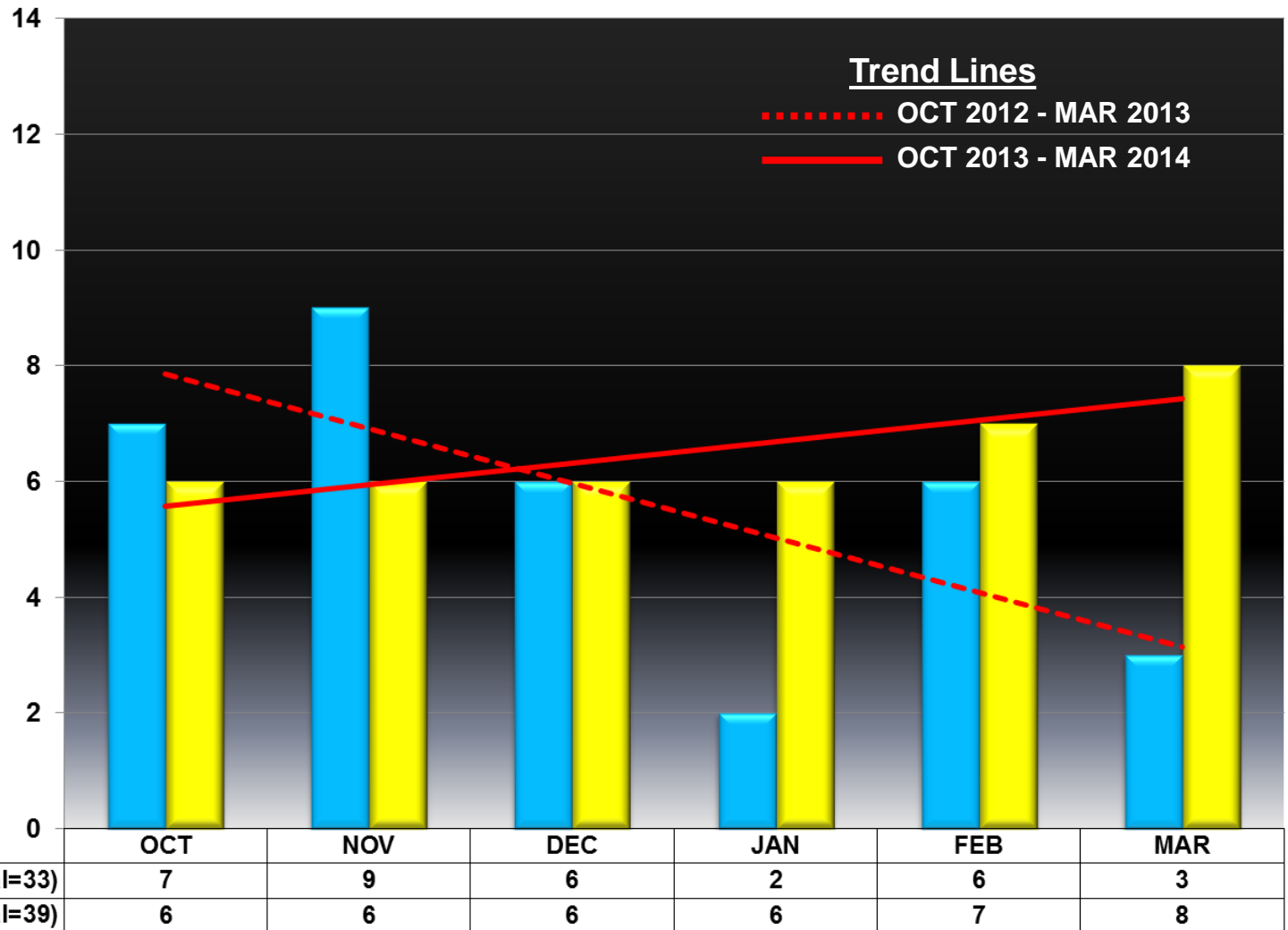
Source: OSSI RMS



PORT ST LUCIE POLICE DEPARTMENT

District 4 Auto Burglaries – 6 Month Trend Comparison

October 2012 – March 2013 vs. October 2013 – March 2014



Increased 18.2% (+6)

Source: OSSI RMS

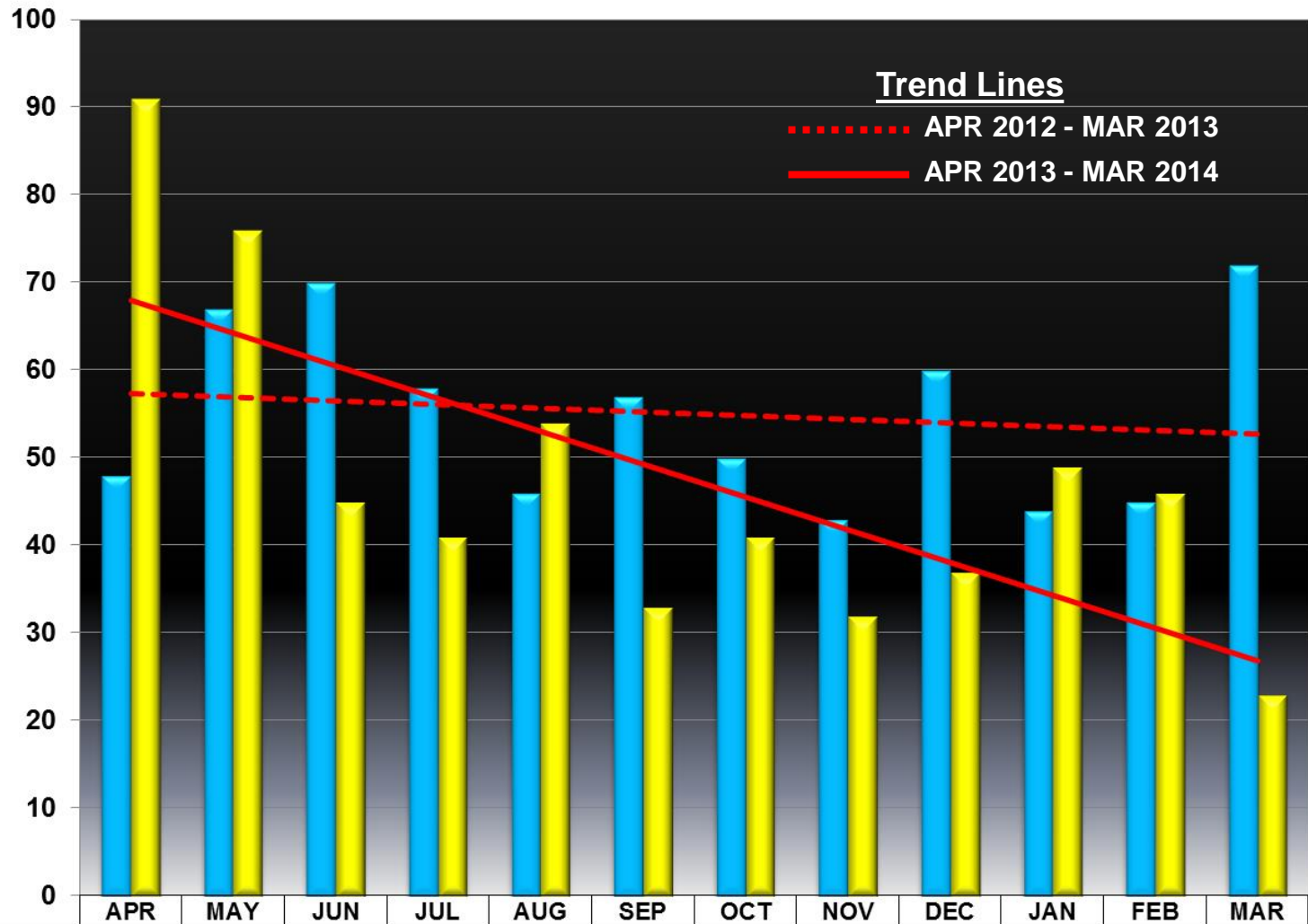


PORT ST LUCIE POLICE DEPARTMENT

Citywide Residential Burglaries – 12 Month Trend Comparison



April 2012 – March 2013 vs. April 2013 – March 2014



	APR	MAY	JUN	JUL	AUG	SEP	OCT	NOV	DEC	JAN	FEB	MAR
APR 2012 - MAR 2013 (Total=660)	48	67	70	58	46	57	50	43	60	44	45	72
APR 2013 - MAR 2014 (Total=568)	91	76	45	41	54	33	41	32	37	49	46	23

Decreased 13.9% (-92)

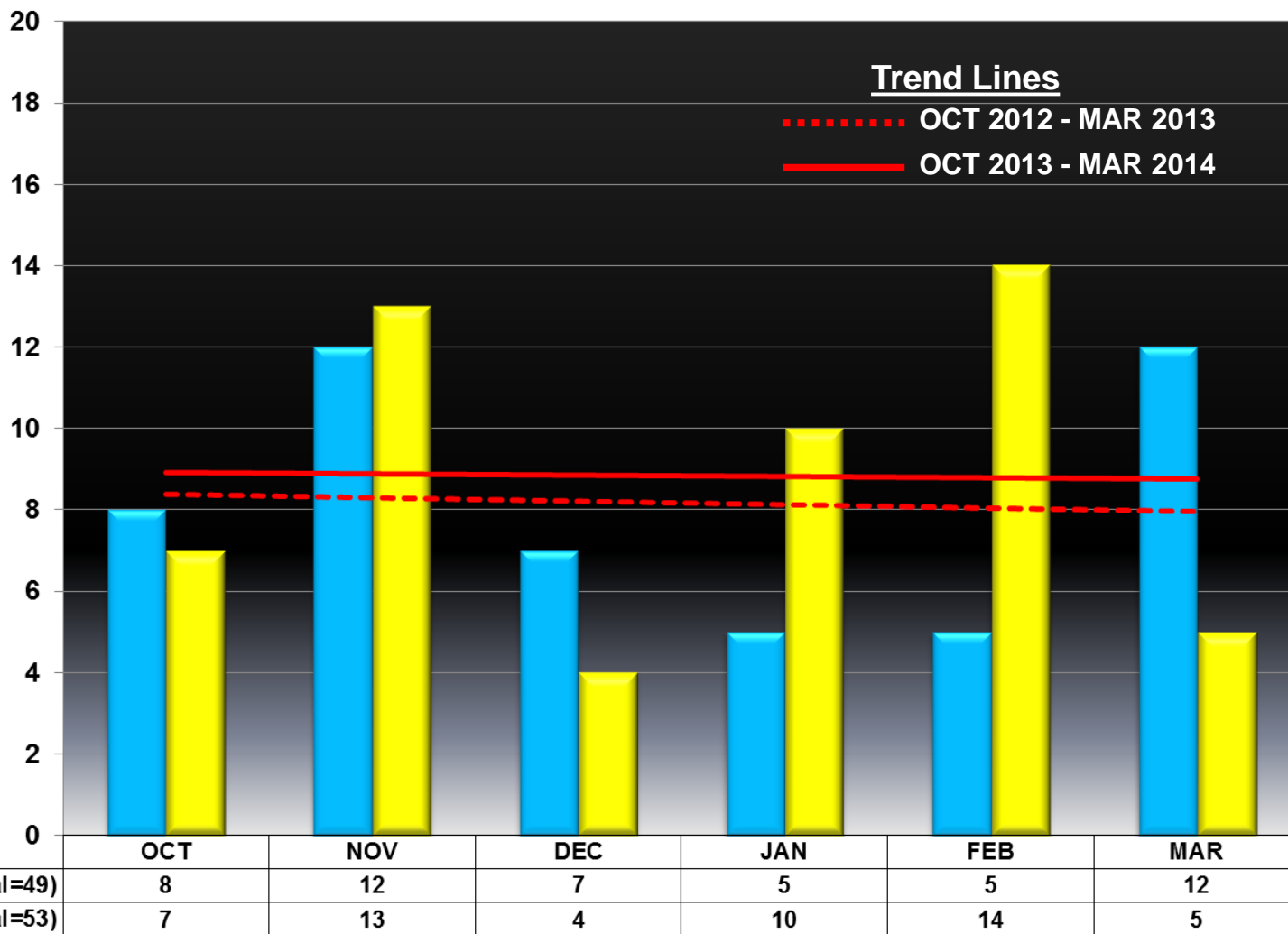
Source: OSSI RMS



PORT ST LUCIE POLICE DEPARTMENT

District 1 Residential Burglaries – 6 Month Trend Comparison

October 2012 – March 2013 vs. October 2013 – March 2014



Increased 8.2% (+4)

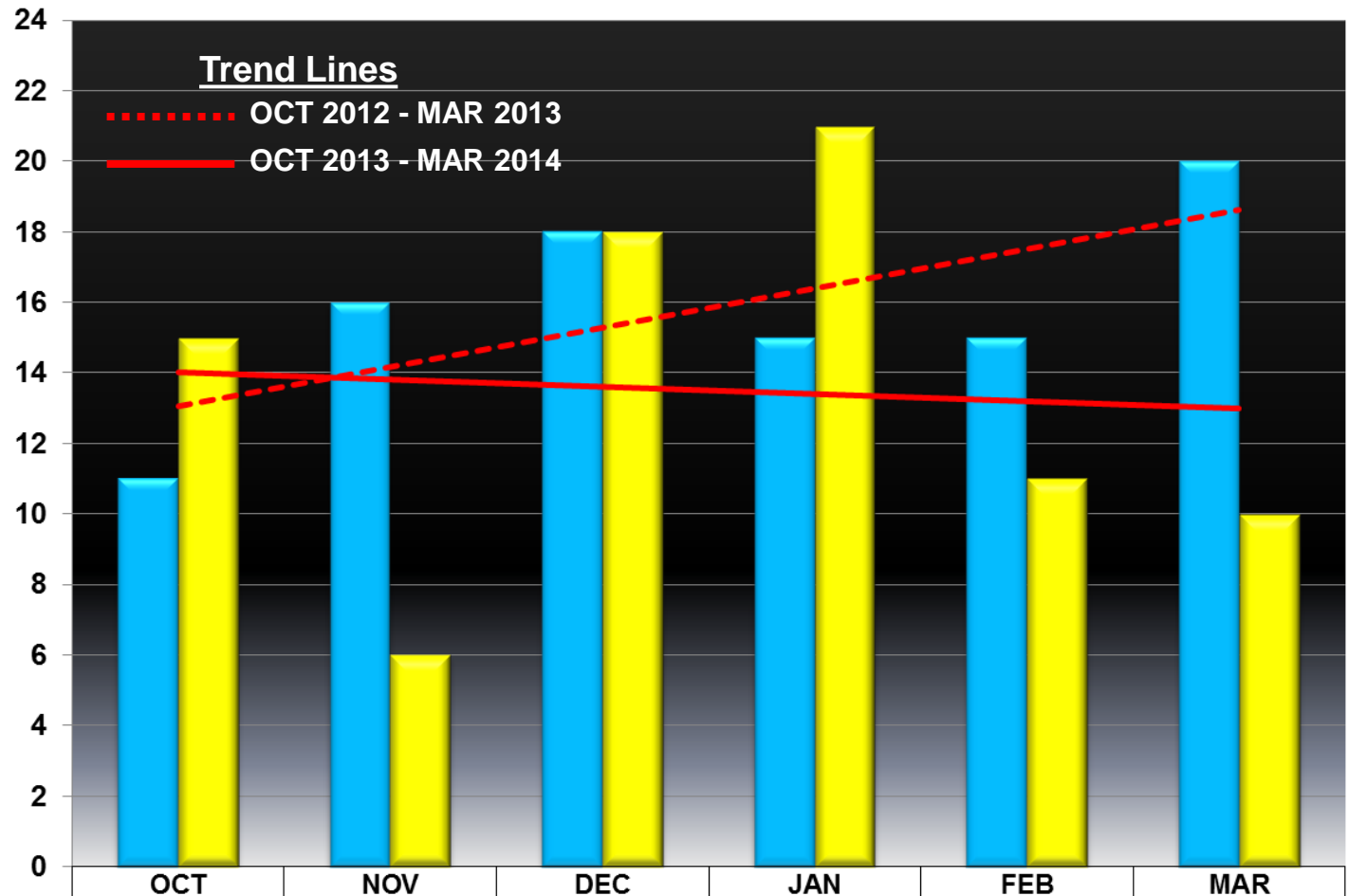
Source: OSSI RMS



PORT ST LUCIE POLICE DEPARTMENT

District 2 Residential Burglaries – 6 Month Trend Comparison

October 2012 – March 2013 vs. October 2013 – March 2014



■ OCT 2012 - MAR 2013 (Total=95)

■ OCT 2013 - MAR 2014 (Total=81)

Decreased 14.7% (-14)

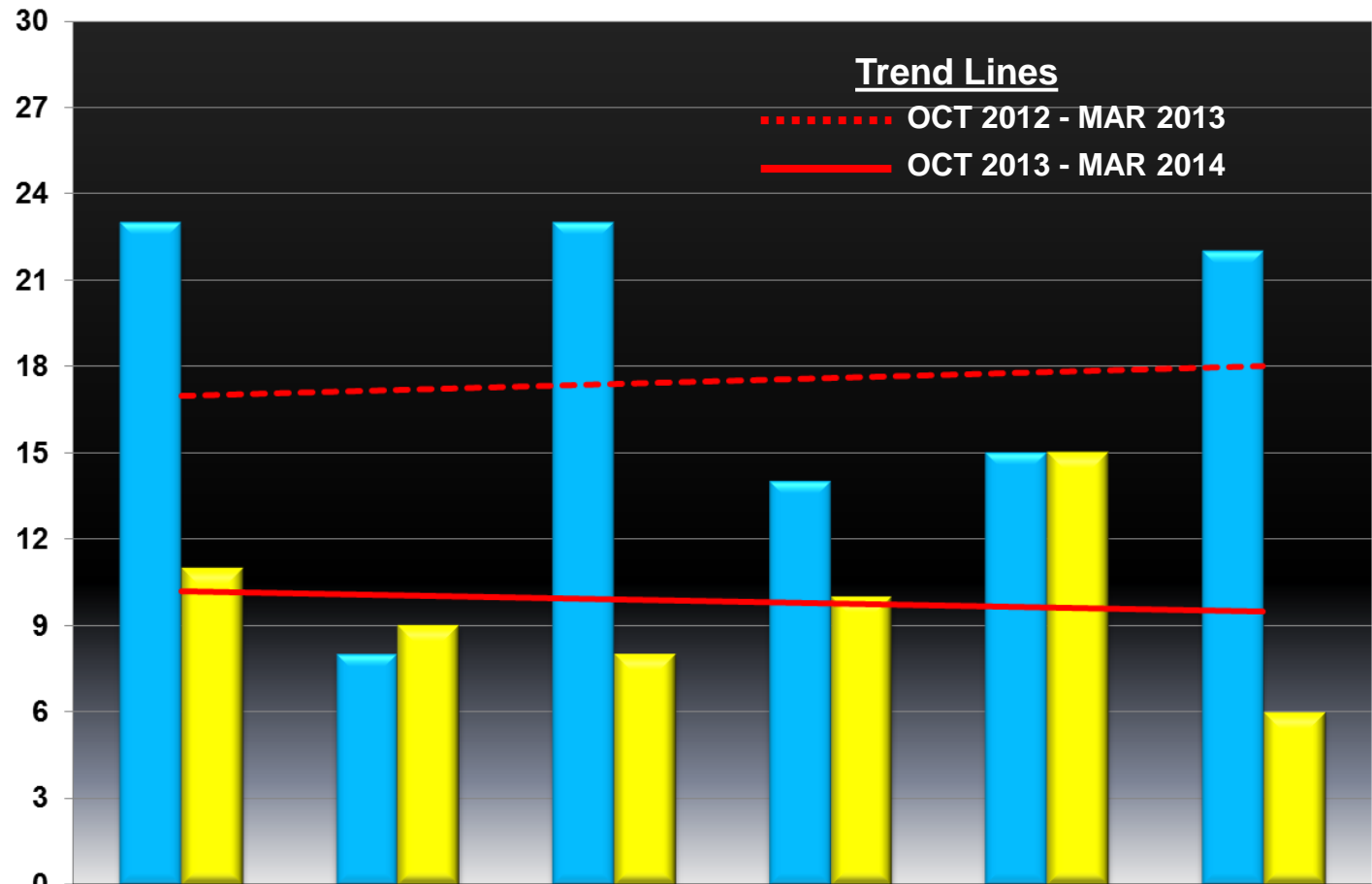
Source: OSSI RMS



PORT ST LUCIE POLICE DEPARTMENT

District 3 Residential Burglaries – 6 Month Trend Comparison

October 2012 – March 2013 vs. October 2013 – March 2014



■ OCT 2012 - MAR 2013 (Total=105)	23	8	23	14	15	22
■ OCT 2013 - MAR 2014 (Total=59)	11	9	8	10	15	6

Decreased 43.8% (-46)

Source: OSSI RMS

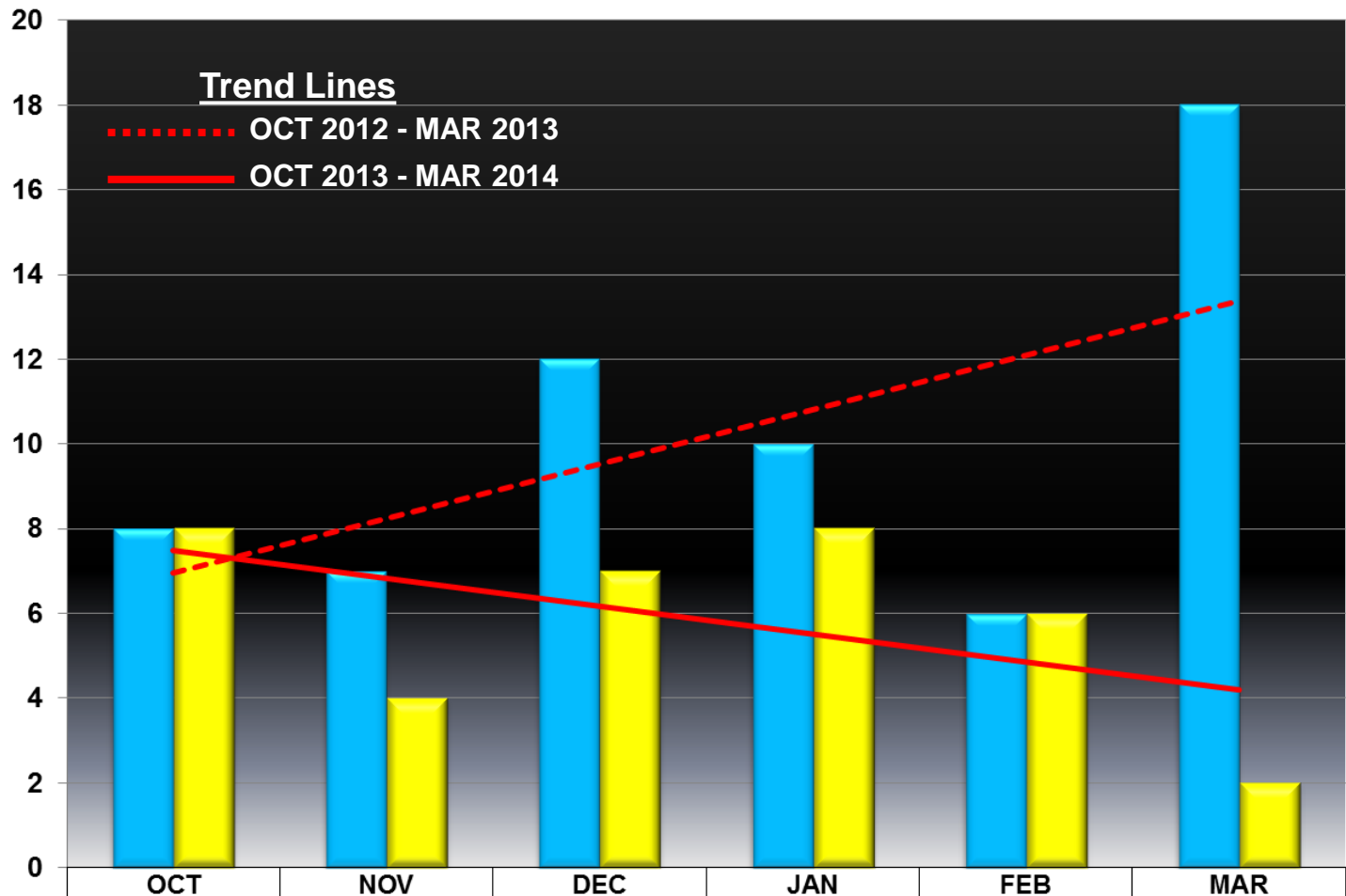


PORT ST LUCIE POLICE DEPARTMENT

District 4 Residential Burglaries – 6 Month Trend Comparison



October 2012 – March 2013 vs. October 2013 – March 2014



■ OCT 2012 - MAR 2013 (Total=61)

■ OCT 2013 - MAR 2014 (Total=35)

Decreased 42.6% (-26)

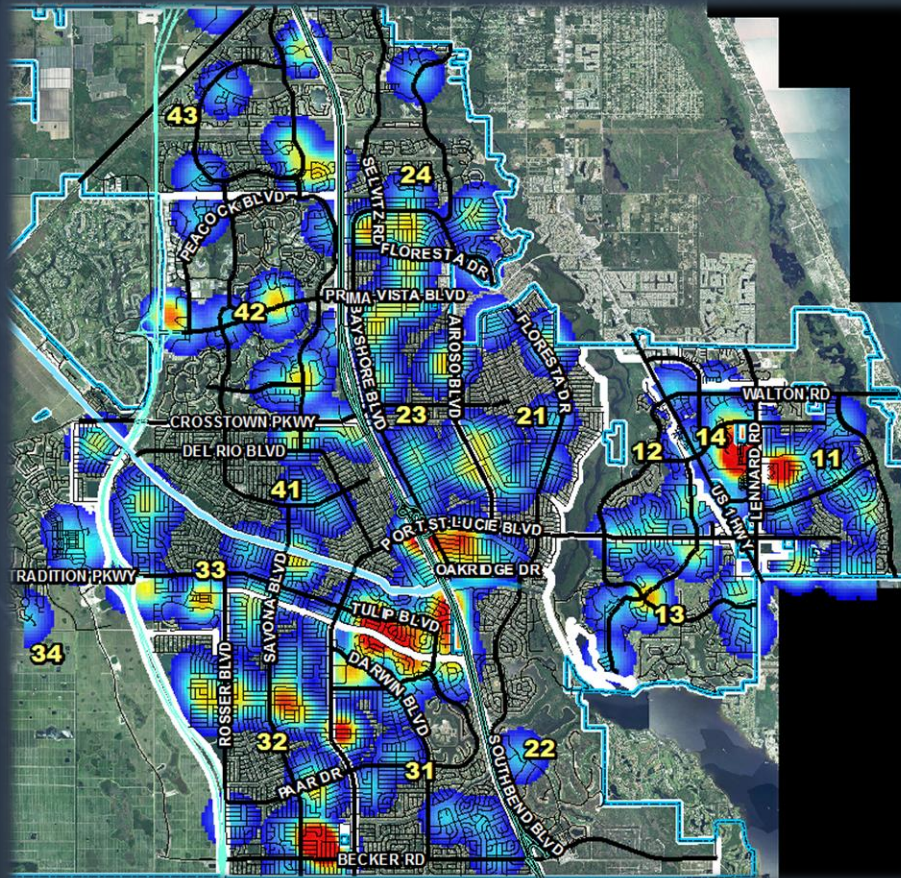
Source: OSSI RMS



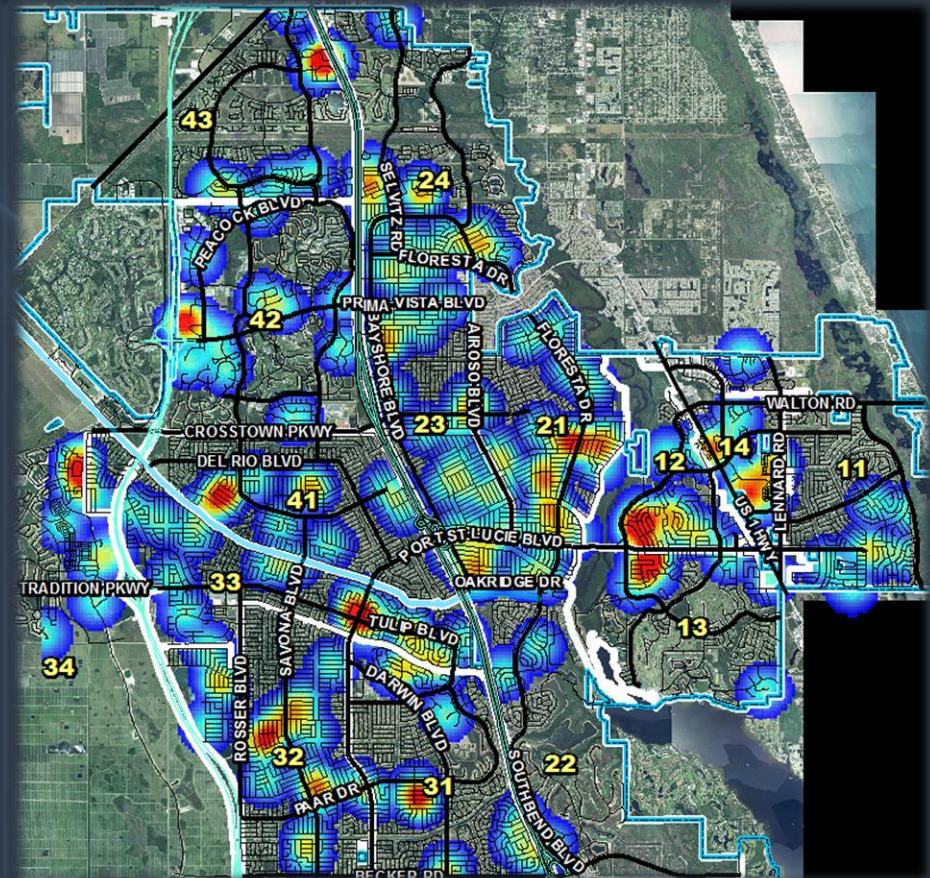
3 MONTH SPATIAL DENSITY COMPARISON MAP

Citywide - Auto and Residential Burglaries
October 1, 2013 – March 31, 2014

PRIOR 3 MONTHS
(Oct 2013 - Dec 2013)



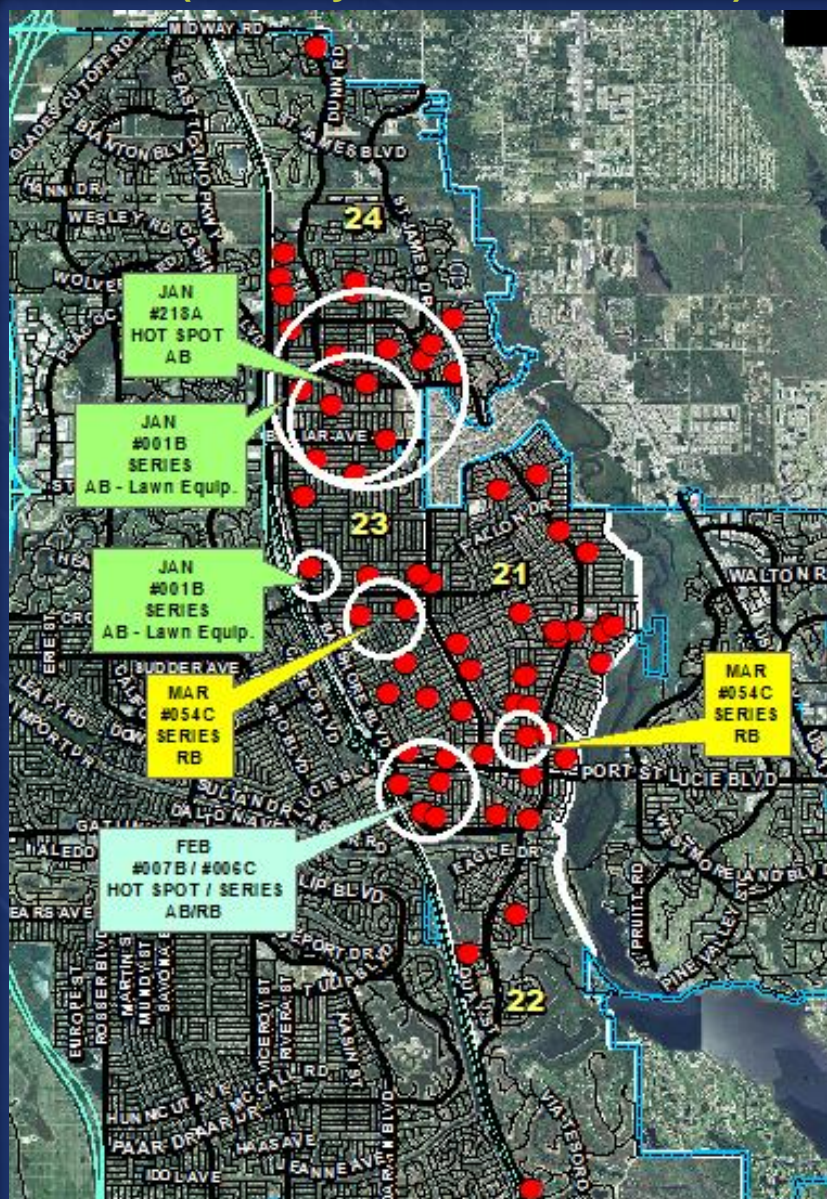
CURRENT 3 MONTHS
(Jan 2014 - Mar 2014)





3 MONTH PATTERN COMPARISON MAP

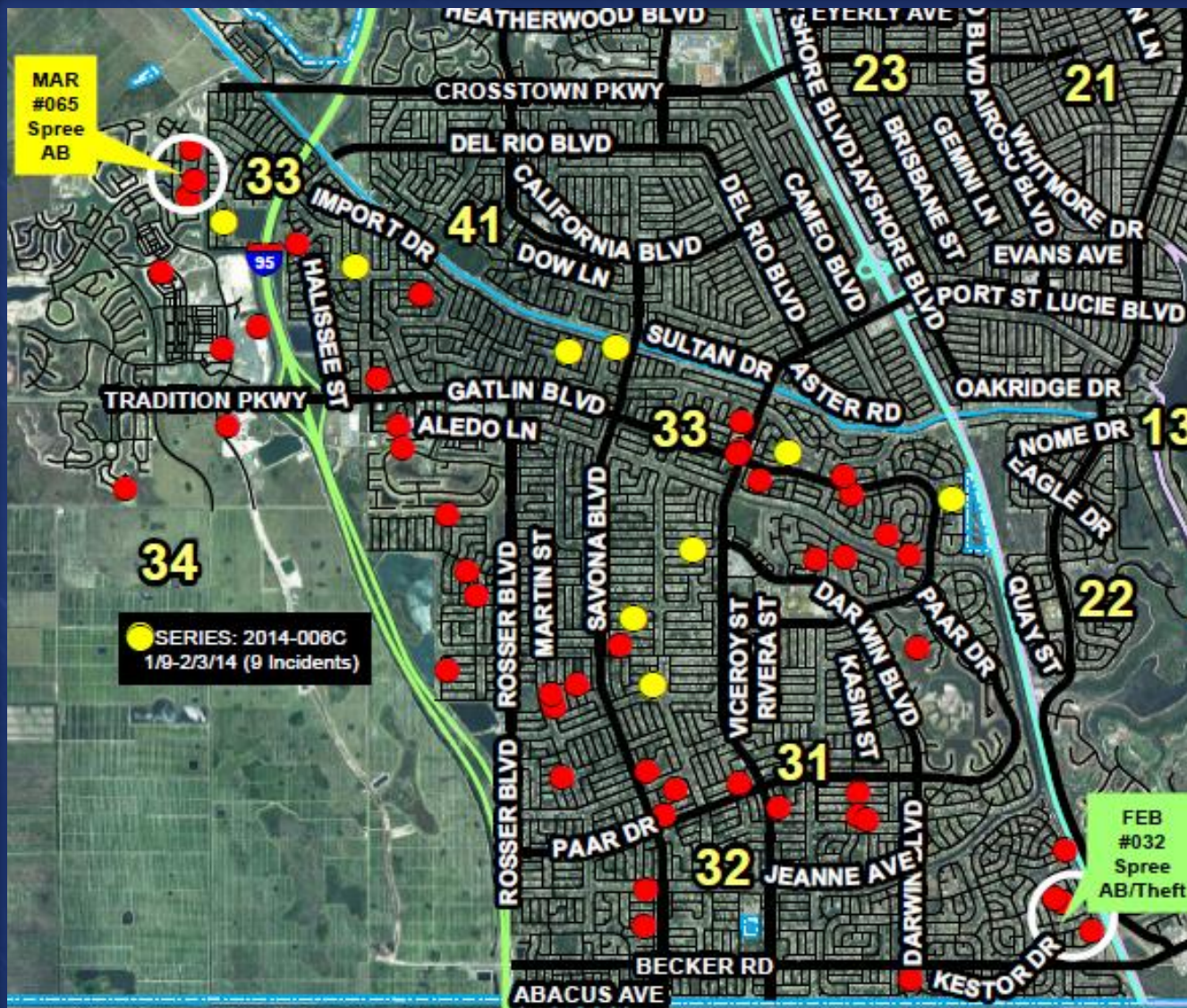
District 2 Auto and Residential Burglaries
(January 2014 - March 2014)





3 MONTH PATTERN COMPARISON MAP

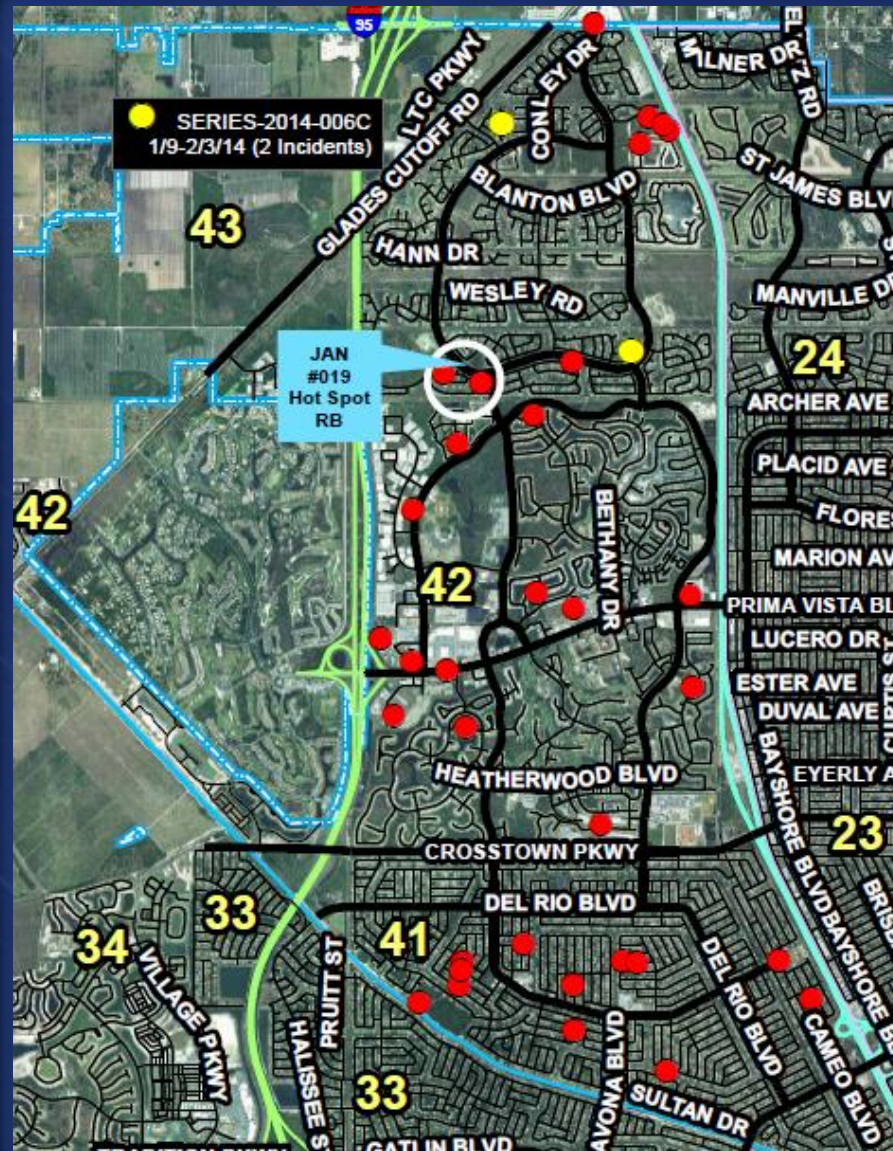
District 3 – Auto and Residential Burglaries
(January 2014 - March 2014)





3 MONTH PATTERN COMPARISON MAP

District 4 Auto and Residential Burglaries
(January 2014 - March 2014)



The End